



TECHNOCRATES CONSTRUCTION LIMITED
UXBRIDGE, LONDON

Current Project



TOWER BRIDGE RD

91-95 Tower Bridge Road, London, SE1 4TW

- 01 Project Facts
- 02 Project Brief
- 03 Project Team
- 04 Project Pictures

Table of
CONTENTS



PROJECT FACTS

Job No: TCL-1360

Project Name: Tower Bridge Road

Client: Farleigh Hillmark (Tower Bridge) LLP

Location: 91-95 Tower Bridge Road, SE1, London

Project Type: New Build-04 storey

No. of Units: 09 Residential, 01 Commercial

Project Value: £ 2.5 Million

Contract Type: JCT D&B

Duration: 16 Months





PROJECT BRIEF

Demolition of the existing buildings on the Site and Construction of 2/3 story new building adjoining units comprising of two houses, one flat and a one duplex house facing Alice Street and a new three-story building with mansard level and re-use of existing basement facing onto Tower Bridge Road, to provide five flats and a retail unit at the ground floor with associated bin store, cycle storage, and landscape areas.

Piling is designed for the foundation for both the rear and front blocks. For front block superstructure RCC ground floor slab with a structural steel frame with composite concrete metal decking, intermediate floors are designed. For rear houses beam & block floor, traditional brick & block masonry external walls with structural steel elements to support timber joists at intermediate floors are designed by the structural engineer.

A number of SuDS components are proposed for the site, which includes Blue-green roof with approximately 104.3m² total surface area. Pervious paving with sub-base storage with approximate surface area of 54.2m². Surface water to be discharged at controlled rate (to achieve a 50% betterment against the pre-development runoff rates) from the site to the local public surface water sewer.

PROJECT TEAM

Client:

Farleigh Hillmark (Tower Bridge) LLP

Principal Contractor:

Technocrates Construction Limited (TCL)

Project Manager:

Mr Muhammad Ilyas (TCL)

Employer's Agent:

Andre van Wyk (IESIS)

Architect & Principal Designer

Stephen Davy Peter Smith Architects Ltd.

Structural Engineer:

ADD Consulting

M&E Designer:

ENG Design Ltd

PROJECT PICTURES



Demolition of rear wall



Demolition of rear building



Pile Probing Works



Pile Probing Works



Piling Works



Piling Works



Pilling Works



Excavation for Ground Beams



Reinforcement Ground Beams



Reinforcement Ground Beams



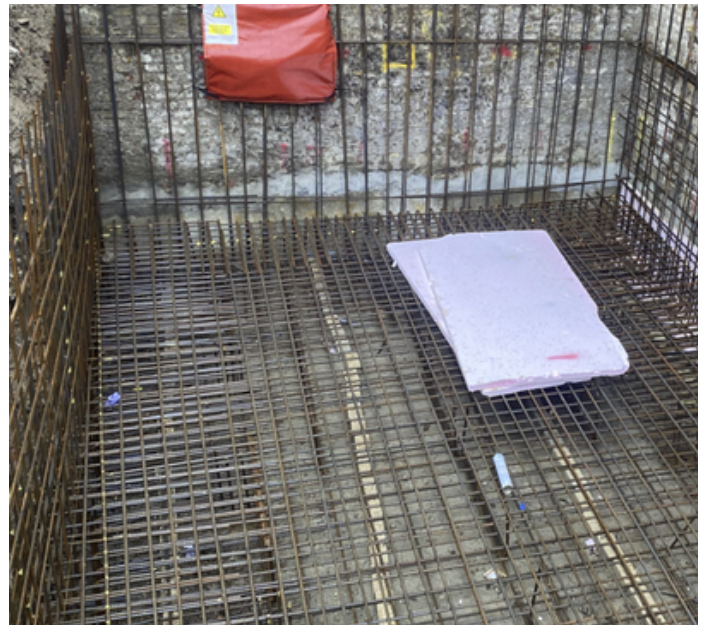
Ground Beams



Ground Beams



Basement Pile cutting



Basement Reinforcement



Basement Concrete



Basement Concrete



Beam & Block Floor Block B



Beam & Block Floor Block B



Block & Structural Steel Work Block B



Structural Steel Works Block A



Sub-floor Timber Joists Block B



Concrete Metal Decking Flat 1- Block B



Technocrates Construction Ltd.

40- Long Lane, Hillingdon, Uxbridge, London, UB10 0EG
www.technocrates.uk
info@technocrates.uk
0208-5733355